

Ascendent Reloaded [D]

Bouclé Stoff / Carlucci

Zusammensetzung 30% Polyacryl
29% Polyester
26% Wolle
15% Baumwolle

Breite 140 cm

Musterrapport -

Lichtechtheit 4-5 (EN ISO 105-B02)

Pilling 4-5

Scheuertouren 50.000

Pflegehinweis



CA 1758/090



CA 1758/070



CA 1758/071



CA 1758/072



CA 1758/020



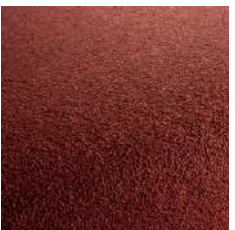
CA 1758/021



CA 1758/030



CA 1758/022



CA 1758/060



CA 1758/010



CA 1758/040



CA 1758/031



CA 1758/082



CA 1758/051



CA 1758/050



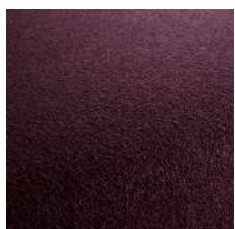
CA 1758/091



CA 1758/092



CA 1758/093



CA 1758/081



CA 1758/080



Bouclette [D]

Easy to clean / Leinenoptik / strapazierfähig

Zusammensetzung 64% Polyester
32% Viscose
4% Cotton

Breite 140 cm

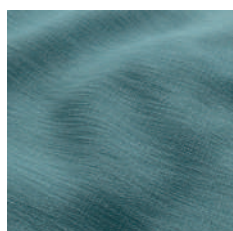
Musterrapport -

Lichtechtheit 4

Pilling 4

Scheuertouren 30.000

Pflegehinweis



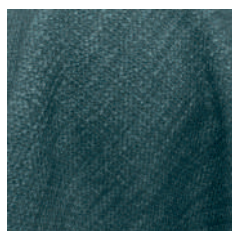
01 - Whisper



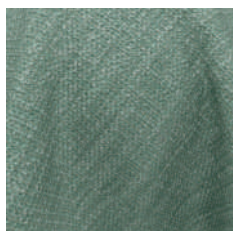
02 Scuba



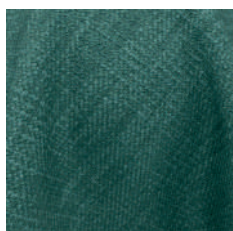
03 - Navy



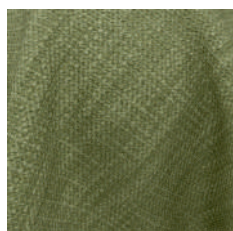
04 - Emerald



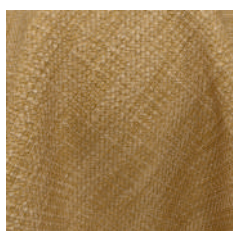
06 - Oasis



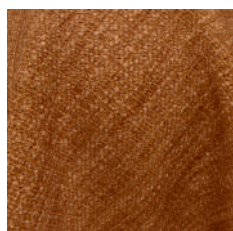
07 - Jade



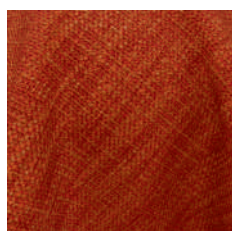
09 - Seegrass



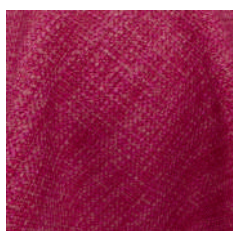
11 - Spice



12 - Paprika



13 - Tabasco



16 - Confetti



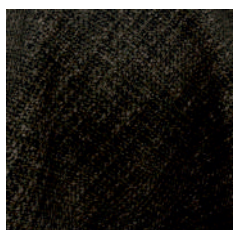
18 - Feather



19 - Mouse



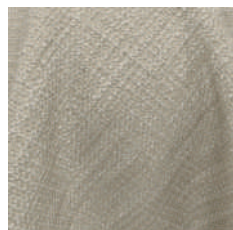
21 - Charcoal



23 - Pewter



24 - Bison



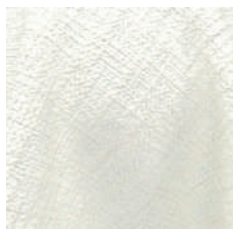
25 - Fossil



26 - Pearl



27 - Swan



28- Wool



29 - Ivory



30 - Linen



31 - Nougat



32 - Earth



BREMA [D]

Easy to clean / grober Webstoff

Zusammensetzung 39% Polyacryl
39% Polyester
14% Cotton
8% Wolle

Breite 140 cm

Musterrapport -

Lichtechtheit 5

Scheuertouren 28.000

Pilling 4-5

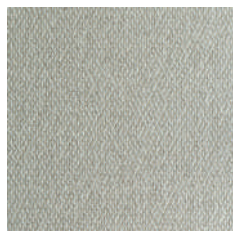
Pflegehinweis



102- Ecreu



05 - Beige



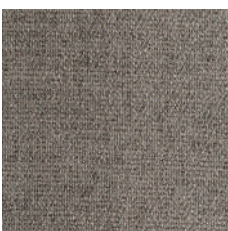
01 - Natural



03 - Sand



10 - Liver



12 - Taupe



60 - Light Grey



40 - Ash Grey



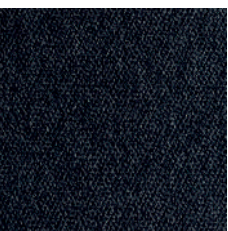
158 - Niagara



65- Grey



68 - Dark Grey



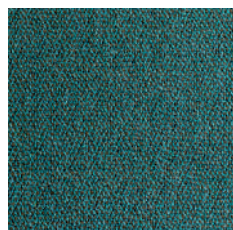
79 - Charcoal



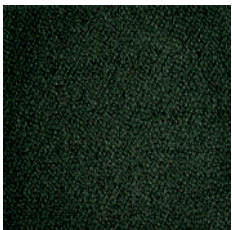
45- Blue



90- Indigo



56 - Petrol



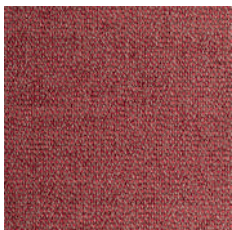
88 - Turtle



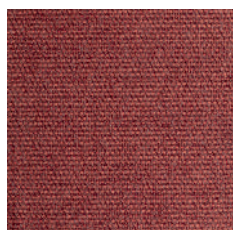
123 - Espresso



192 - Wenge



36 - Carmine



183 - Saffron



166- Blossom



92 - Blush



06 - Mustard



31 - Terra

Coverlet [D]

leicht strukturierter Samtstoff / Öko-Tex

Zusammensetzung 100% Polyester

Breite 144 cm

Musterrapport -

Lichtechtheit 5 (EN ISO 105-B02)

Scheuertouren 60.000

Pilling 4-5

Pflegehinweis



01 Night



02 Denim



05 Scuba



06 Oasis



07 Hunter



09 Straw



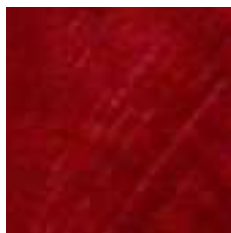
10 Wheat



11 Rust



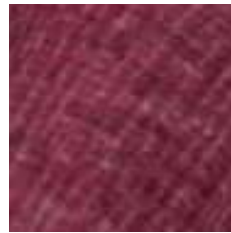
12 Sierra



13 Cardian



14 Berry



15 Violet



17 Bark



18 Otter



19 Elephant



20 Fungi



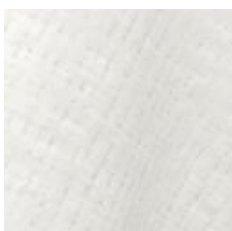
21 Earth



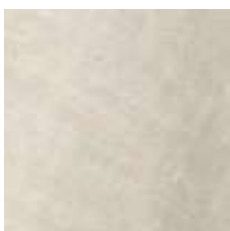
22 Sand



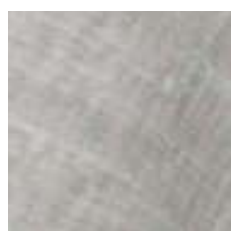
24 Ivory



25 Snow



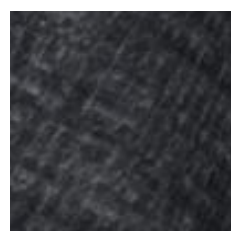
26 Wool



28 Mist



29 Iron



30 Charcoal

Mokka [D]

wolliger Plüschstoff / JAB Anstoetz

Zusammensetzung 75% Wolle/
25% Polyester

Breite 150 cm

Musterrapport -

Lichtechtheit -

Scheuertouren 40.000

Pilling 3-4

Pflegehinweis



JA 1020-71



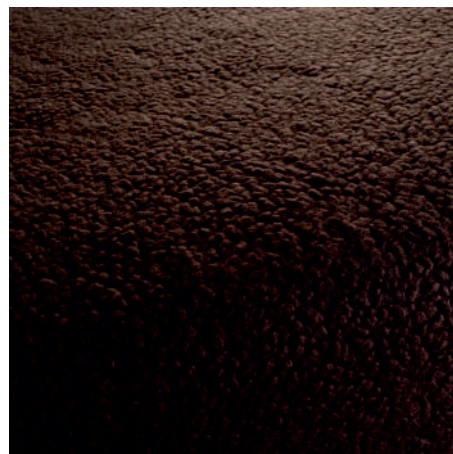
JA 1020-72



JA 1020-60



JA 1020-20



JA 1020-21



JA 1020-70



Moontrace [D]

Unregelmäßige Strukturen / Chivasso

Zusammensetzung 53% Polyacryl,
29% Polyester,
16% Baumwolle,
2% Viskose

Breite 137 cm

Musterrapport -

Lichtechtheit k. A.

Scheuertouren 40.000

Pilling 4 (EN ISO 105 B02)

Pflegehinweis



CA1609-070



CA1609-093



CA1609-091



CA1609-020



CA1609-021



CA1609-071



CA1609-022



CA1609-030



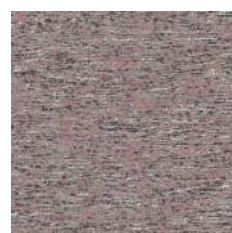
CA1609-080



CA1609-081



CA1609-031



CA1609-060



CA1609-061



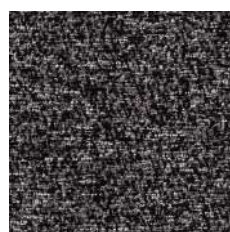
CA1609-010



CA1609-082



CA1609-092



CA1609-099



CA1609-023



PERFECTO [D]

Easy to clean / Schmutzabweisend

Zusammensetzung 36% Polyester
32% Cotton
22% Viskose
10% Leinen

Breite 140 cm

Musterrapport -

Lichtechtheit 5

Scheuertouren 100.000

Pilling 4

Pflegehinweis



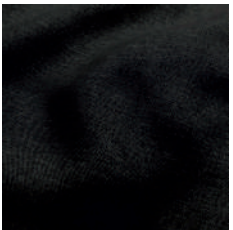
02 - Zinc



03 - Monument



04 - Shark



05 - Onyx



08 - Sterling



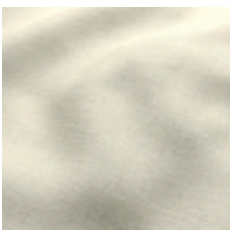
09 - Aluminium



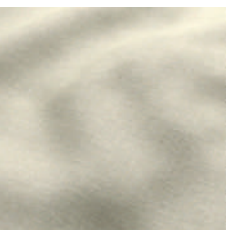
10 - Mouse



12 - Flake



15 - Nougat



16 - Natural



17 - Seegrass



18 - Sand



19 - Cement



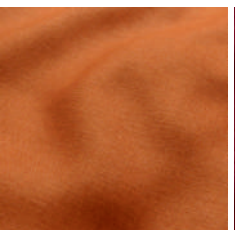
21 - Dune



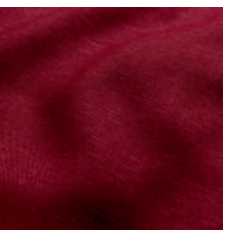
25 - Stucco



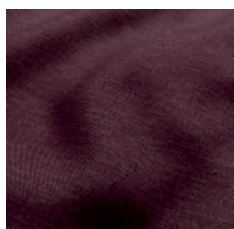
28 - Beige



32 - Carrot



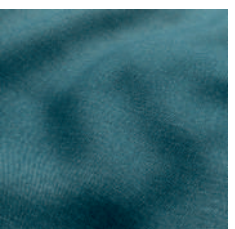
37 - Vino



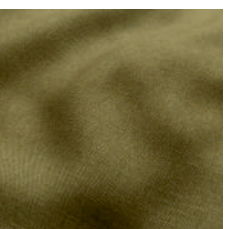
38 - Aubergine



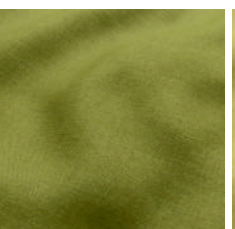
44 - Denim



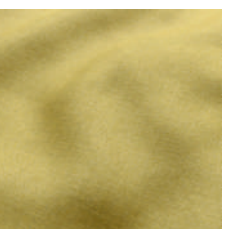
49 - Hydro



57 Cypress - Turtle



58 - Oasis



60 - Mustard



Rocco [D]

Easy to clean / Leinenoptik / pflegeleicht

Zusammensetzung 82% Polyester
18% Acryl

Breite 140cm

Musterrapport -

Lichtechtheit 5

Scheuertouren 30.000

Pilling 4

Pflegehinweis 



01 - Linen



02 - Flax



03 - Pearl



04 - Putty



05 - Limestone



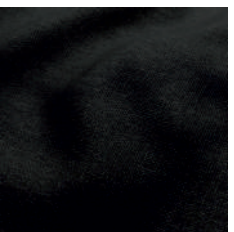
06 - Iceberg



07 - Mouse



CA 1610/022



09 - Onyx



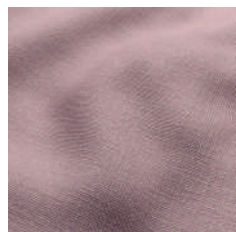
11 - Nut



12 - Mushroom



13 - Beaver



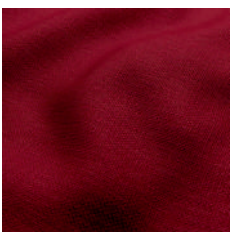
14 - Boudoir



15 - Parma



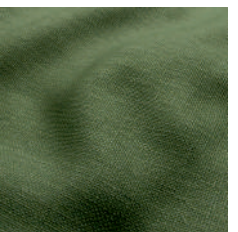
16 - Iris



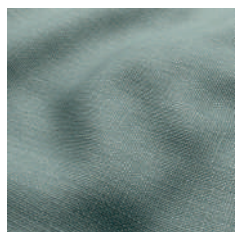
17 - Sauvignon



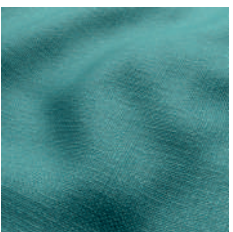
20 - Tinsel



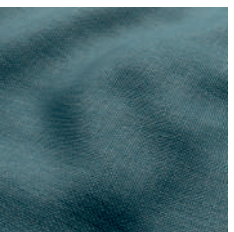
22 - Bottle



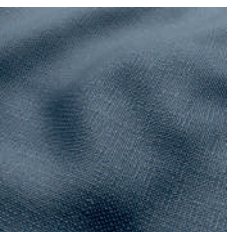
23 - Duckegg



24 - Scuba



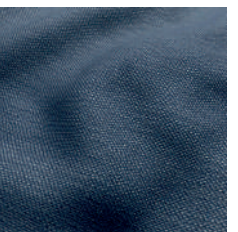
25 - Ocean



26 - Denim



27 - Indigo



28 - Marine

Spellbound [D]

Wolliger Boucléstoff / Carlucci

Zusammensetzung 29% Polyester
25% Wolle
25% Polyacryl
21% Baumwolle

Breite 142 cm

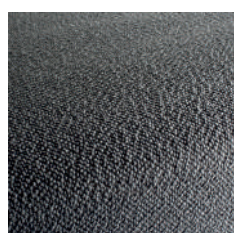
Musterrapport -

Lichtechtheit 4-5 EN ISO 105-B02

Scheuertouren 45.000

Pilling 4

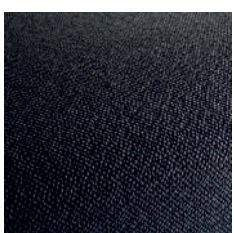
Pflegehinweis



CA 1682/091



CA 1682/092



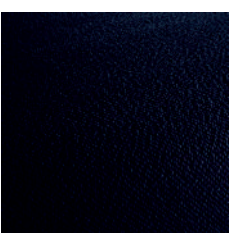
CA 1682/093



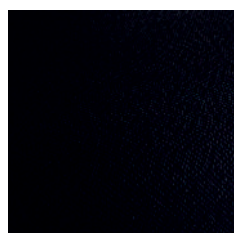
CA 1682/050



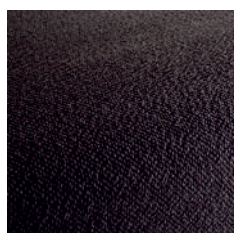
CA 1682/051



CA 1682/052



CA 1682/099



CA 1682/023



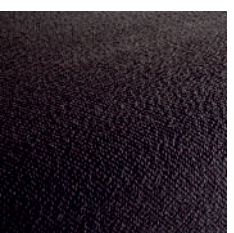
CA 1682/021



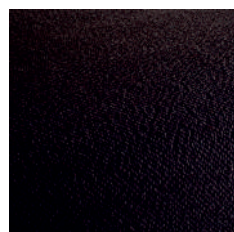
CA 1682/020



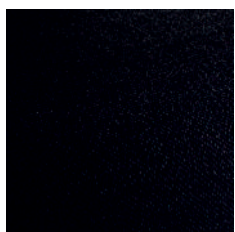
CA 1682/022



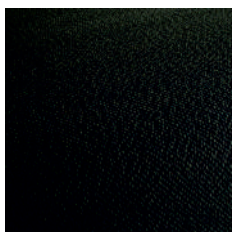
CA 1682/023



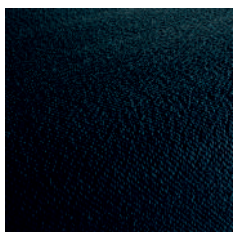
CA 1682/024



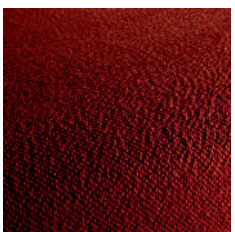
CA 1682/025



CA 1682/030



CA 1682/080



CA 1682/061



CA 1682/040



CA 1682/070



CA 1682/072



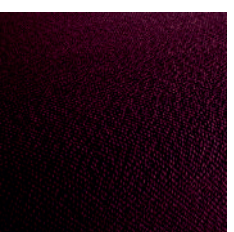
CA 1682/071



CA 1682/090



CA 1682/060



CA 1682/010



Stone Washed Rel. [D]

feine Leinenstruktur, edler Knitter-Effekt

Zusammensetzung 100% Leinen

Breite 139 cm

Musterrapport -

Lichtechtheit 3-4 (EN ISO 105-B02)

Scheuertouren 30.000

Pflegehinweis 



CH 2559 - 079



CH 2559 - 072



CH 2559 - 073



CH 2559 - 093



CH 2559 - 134



CH 2559 - 099



CH 2559 - 095



CH 2559 - 054



CH 2559 - 058



CH 2559 - 015



CH 2559 - 010



CH 2559 - 012



CH 2559 - 041



CH 2559 - 040



CH 2559 - 043



CH 2559 - 061



CH 2559 - 079



CH 2559 - 086



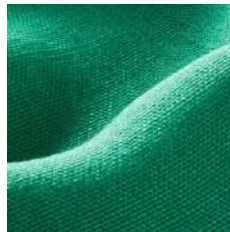
CH 2559 - 032



CH 2559 - 034



CH 2559 - 038



CH 2559 - 039



CH 2559 - 080



CH 2559 - 082